

ORDINANCE NO. 10-2019

**AN ORDINANCE APPROVING THE EVERGREEN PLAZA III
SUBDIVISION OF THE PROPERTY LOCATED AT THE
SOUTHWEST CORNER OF 95TH STREET AND WESTERN AVENUE,
EVERGREEN PARK, ILLINOIS**

BE IT ORDAINED by the Mayor and Board of Trustees of the Village of Evergreen Park, Cook County, Illinois, as follows:

Section 1

That the Evergreen Plaza III Subdivision be approved for 2 lots on the property located at the southwest corner of 95th Street and Western Avenue, Evergreen Park, Illinois, legally described as follows:

Lots 3 and 4 in the Evergreen Plaza II Subdivision in the Northeast $\frac{1}{4}$ of Section 12, Township 37 North, Range 13 East of the Third Principal Meridian, in Cook County, Illinois.

Permanent Index No. 24-12-236-011-0000

Section 2

The plat of subdivision or a declaration of covenants and easements shall provide for reciprocal easements for ingress and egress, and for parking on each lot in the subdivision, or a reciprocal easement agreement shall be executed and recorded for the same. The plat of subdivision shall be in substantially the form attached hereto.

Section 3

This ordinance shall be immediately in full force and effect after passage and approval.

This ordinance was passed and deposited in the office of the Village Clerk of the Village of Evergreen Park this 6th day of May, 2019.

APPROVED by me this 6th
day of May, 2019.



CATHERINE T. APARO, Village Clerk

JAMES J. SEXTON, Mayor

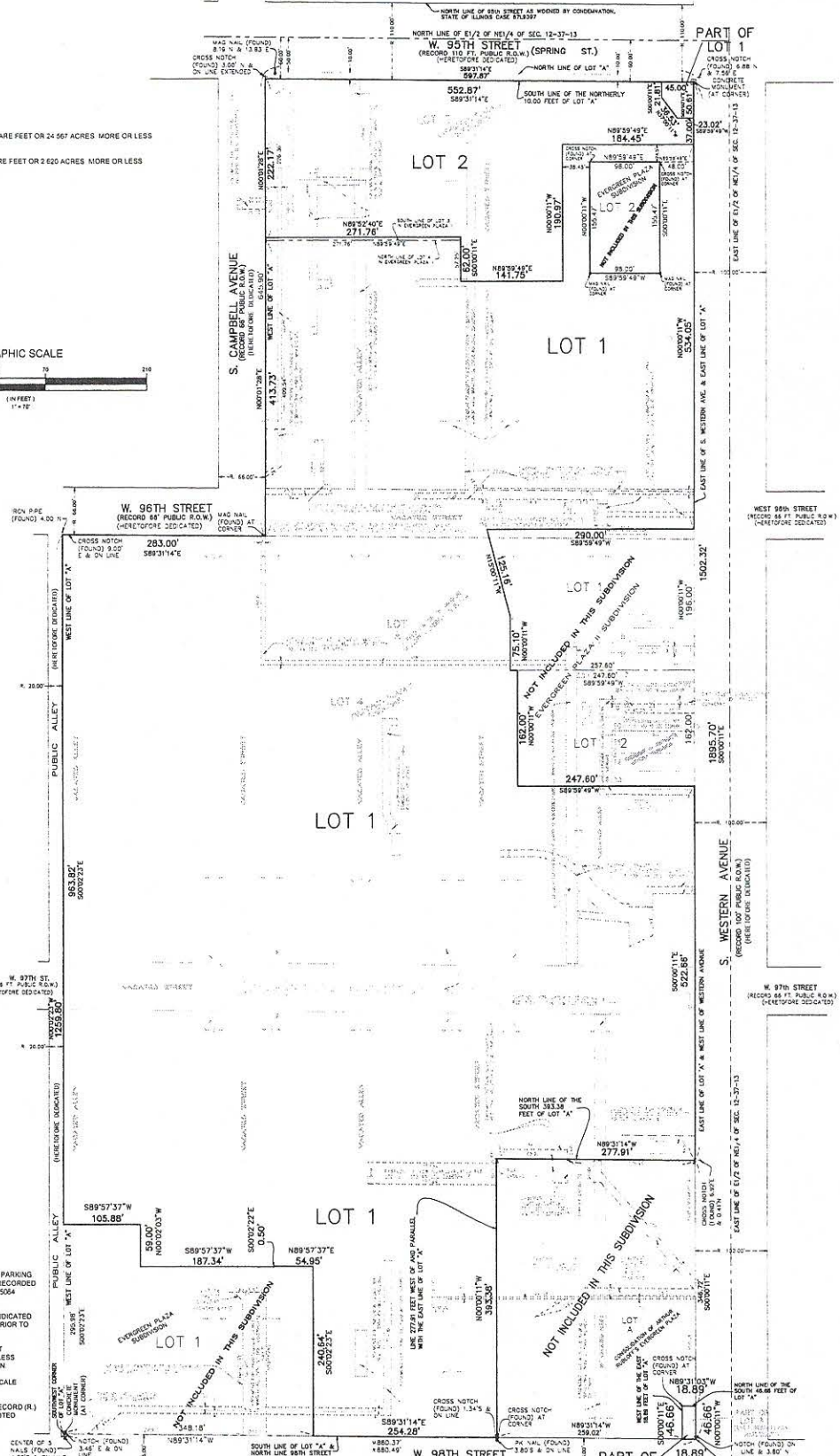
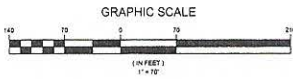
EVERGREEN PLAZA III

BEING A RESUBDIVISION OF LOTS 3 AND 4 IN EVERGREEN PLAZA II SUBDIVISION IN THE NORTHEAST 1/4 OF SECTION 12, TOWNSHIP 37 NORTH, RANGE 13, EAST OF THE THIRD PRINCIPAL MERIDIAN, IN COOK COUNTY, ILLINOIS.

RESERVED FOR COOK COUNTY RECORDER

LOT 1
CONTAINS 1 070 150 SQUARE FEET OR 24 567 ACRES MORE OR LESS

LOT 2
CONTAINS 114 107 SQUARE FEET OR 2 620 ACRES MORE OR LESS



NOTES

NON-EXCLUSIVE EASEMENT FOR ACCESS, PARKING, STORM WATER DRAINAGE AND UTILITIES RECORDED DECEMBER 22 2015 AS DOCUMENT 1336645064 AFFECTS THE SUBDIVIDED PROPERTY.

MONUMENTATION AT ALL LOT CORNERS INDICATED BY SYMBOL OR NOTATION ESTABLISHED PRIOR TO PLAT RECORDATION.

IRON PIPES TO BE SET AT REMAINING LOT CORNERS AFTER PLAT RECORDATION UNLESS OTHERWISE INDICATED OR NOTED HEREON.

NO DIMENSIONS SHALL BE ASSUMED BY SCALE MEASUREMENT UPON THIS PLAT.

DISTANCES SHOWN HEREON ARE BOTH RECORD (R.) & MEASURED (M.) UNLESS OTHERWISE NOTED.

CREATED BY: JORDAN EYEN DEVELOPMENT

DESIGNED BY: GREMLY & BIEDERMANN

PLATTED BY: GREMLY & BIEDERMANN

DATE: MARCH 2 2019

SCALE: 1" = 70'

1 OF 2

2019-26443-001