

**ORDINANCE NO. 13-2019**

**AN ORDINANCE APPROVING THE EVERGREEN PROMENADE  
FIRST RESUBDIVISION OF THE PROPERTY LOCATED AT  
2559-2603 WEST 95<sup>th</sup> STREET, EVERGREEN PARK, ILLINOIS**

BE IT ORDAINED by the Mayor and Board of Trustees of the Village of Evergreen Park, Cook County, Illinois, as follows:

**Section 1**

That the Evergreen Promenade First Resubdivision be approved for 2 lots located at 2559-2603 West 95<sup>th</sup> Street, Evergreen Park, Illinois, legally described as follows:

Lot 1 in Evergreen Promenade, being a subdivision of part of the West ½ of the Northeast ¼ of Section 12, Township 37 North, Range 13 East of the Third Principal Meridian, in Cook County, Illinois.

Permanent Index No. 24-12-202-004-0000

**Section 2**

The plat of subdivision or a declaration of covenants and easements shall provide for reciprocal easements for ingress and egress, and for parking on each lot in the subdivision, or a reciprocal easement agreement shall be executed and recorded for the same. The plat of subdivision shall be in substantially the form attached hereto.

**Section 3**

This ordinance shall be immediately in full force and effect after passage and approval.

This ordinance was passed and deposited in the office of the Village Clerk of the Village of Evergreen Park this 3<sup>rd</sup> day of June, 2019.



*Catherine T. Aparo*  
CATHERINE T. APARO, Village Clerk

APPROVED by me this 3<sup>rd</sup>  
day of June, 2019.

*James J. Sexton*  
JAMES J. SEXTON, Mayor

NO.	DESCRIPTION	DATE
1	PREPARED FOR SUBDIVISION	08-18-18
2	REVISION	
3	REVISION	
4	REVISION	
5	REVISION	
6	REVISION	
7	REVISION	
8	REVISION	
9	REVISION	
10	REVISION	

**Manhard CONSULTING**  
 Civil Engineers & Surveyors • Environmental Engineers • Water & Wastewater Engineers  
 2000 North Lincoln Street, Suite 100 • Oak Brook, Illinois 60110  
 Phone: (630) 581-1100 • Fax: (630) 581-1101  
 Website: www.manhardconsulting.com

EVERGREEN PROMENADE FIRST RESUBDIVISION  
 VILLAGE OF EVERGREEN PARK, ILLINOIS  
 FINAL PLAT OF SUBDIVISION

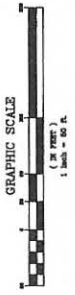
DATE: 08-18-18  
 SHEET NO. 1 OF 2  
 SHEET

PHL: 14-1-201-004

# FINAL PLAT OF SUBDIVISION OF EVERGREEN PROMENADE FIRST RESUBDIVISION

BEING PART OF THE WEST HALF OF THE NORTHEAST QUARTER OF SECTION 12, TOWNSHIP 37 NORTH,  
 RANGE 13 EAST OF THE THIRD PRINCIPAL MERIDIAN, IN COOK COUNTY, ILLINOIS.

THIS SURVEY PREPARED FOR:  
 EVERGREEN PROMENADE, LLC  
 814 COMMERCE DRIVE, SUITE 300  
 OAK BROOK, ILLINOIS 60110



**LEGEND**

EXISTING  
 PROPOSED

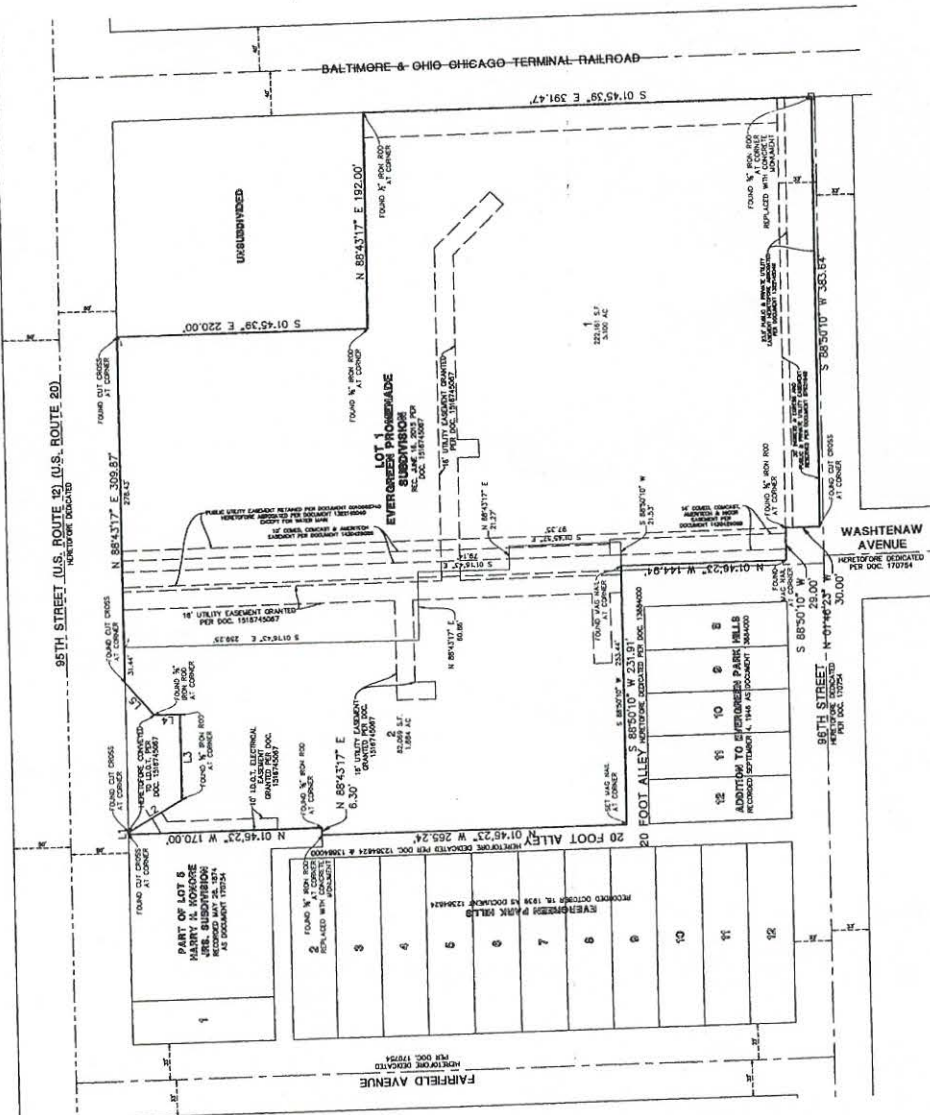
SECTION LINE  
 FRONTYARD DRIVE  
 LOT LINE  
 EASEMENT LINE

**AREA SUMMARY**

LOT 1: 222,180 SQUARE FEET (5.000 AC)  
 LOT 2: 222,180 SQUARE FEET (5.000 AC)  
 TOTAL: 444,360 SQUARE FEET (10.000 AC)

**LINE TABLE**

LINE	BEARING	LENGTH
L1	N 88°43'17" E	135.00
L2	S 01°45'39" E	220.00
L3	N 88°43'17" E	71.37
L4	N 88°43'17" E	23.00
L5	N 88°43'17" E	30.00



PLAT SUBMITTED FOR RECORDING BY:  
 EVERGREEN PROMENADE, LLC  
 814 S. KEDZEE AVENUE  
 EVERGREEN PARK, ILLINOIS 60120

- SURVEYOR'S NOTES:**
1. DIMENSIONS ARE MARKED IN FEET AND DECIMAL PLACES THEREOF.
  2. NO DIMENSION SHALL BE ASSUMED BY SCALE MEASUREMENT HEREON.
  3. THERE MAY BE ADDITIONAL TIES, POINTS, MEASUREMENTS AND LIMITATIONS CONTAINED IN INSTRUMENTS OF RECORD.
  4. COMPARE ALL POINTS BEFORE BEING BY SALE AND IMMEDIATELY REPORT ANY DISCREPANCY TO THE SURVEYOR.
  5. BE LEGIBLE SOURCE: MANHARD.
  6. METEOROLOGICAL AND ATMOSPHERIC CONDITIONS WERE TAKEN INTO ACCOUNT BY THE SURVEYOR.
  7. METEOROLOGICAL AND ATMOSPHERIC CONDITIONS WERE TAKEN INTO ACCOUNT BY THE SURVEYOR.

**OWNER:**  
 EVERGREEN PROMENADE, LLC  
 814 COMMERCE DRIVE, SUITE 300  
 OAK BROOK, ILLINOIS 60110

**MAP TAX BILL TO:**  
 EVERGREEN PROMENADE, LLC  
 814 COMMERCE DRIVE, SUITE 300  
 OAK BROOK, ILLINOIS 60110

